

Safe Farm Futures

Junior

Part 3: Moving Parts, Know Where to Start

AgriAware
EDUCATE • ADVOCATE • ENGAGE



An Roinn Talmhaíochta,
Bia agus Mara
Department of Agriculture,
Food and the Marine

Part 3: Moving Parts, Know Where to Start

Teacher instructions: Work through the material below at your own pace. Moving Parts, Know Where to Start is all about understanding the role of different farm machinery and how to stay safe when we are in the countryside.

In the introduction to the programme, we explored the various types of farms and the jobs involved in caring for the animals and crops that provide us with the food we eat every day. Farmers use machines and equipment to help them with these jobs on the farm.

The most common machine used on the farm is a tractor. Tractors are used to pull other machinery and vehicles on the farm.

The lights help the driver to see when it is dark

Beacon

Flashes an orange / amber colour to let other vehicles and people know its coming

Cab

The farmer sits in the cab to operate the tractor,

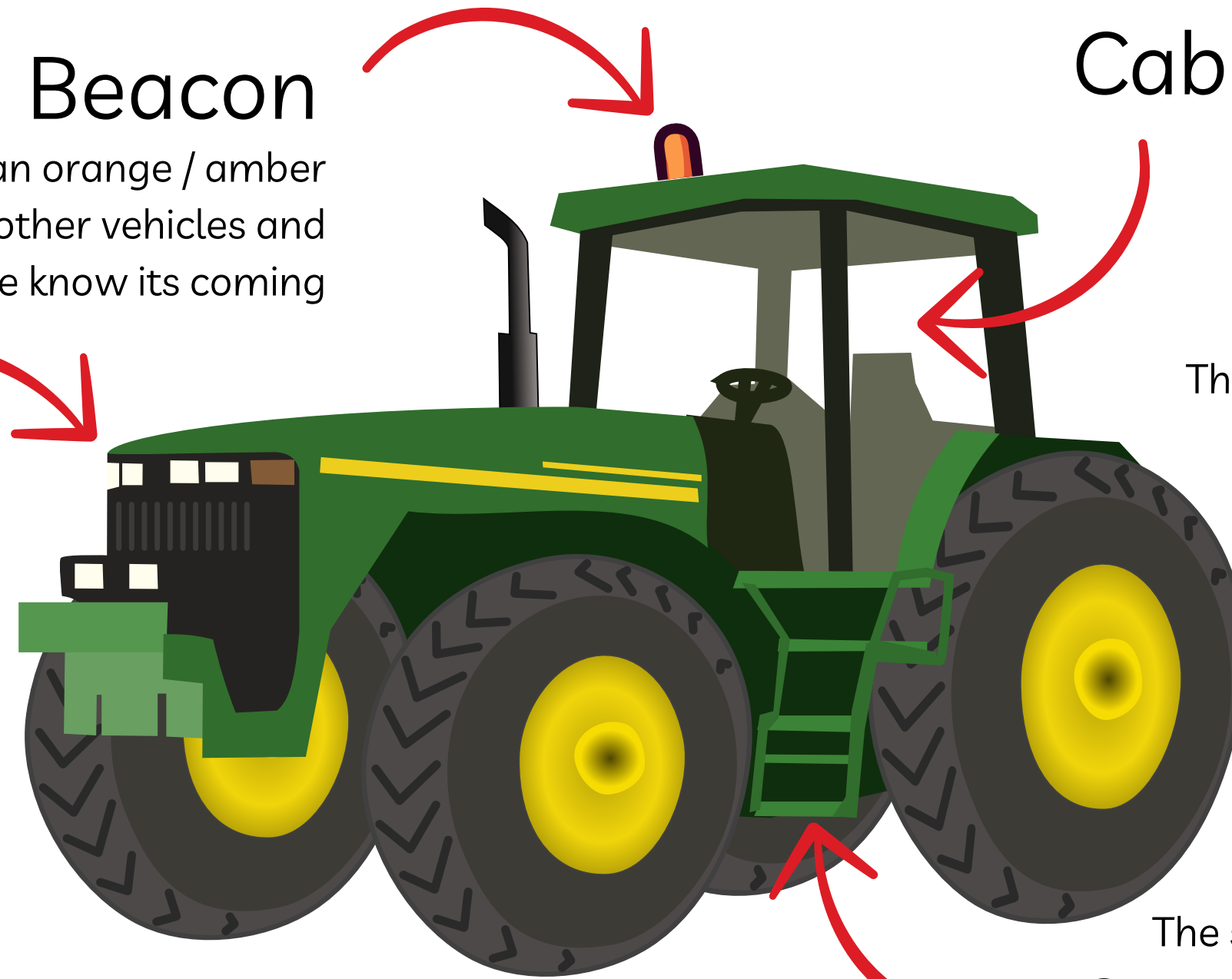
The wheels help the tractor to move.

Lights

Wheel

Steps

The steps help the driver to step into the cab

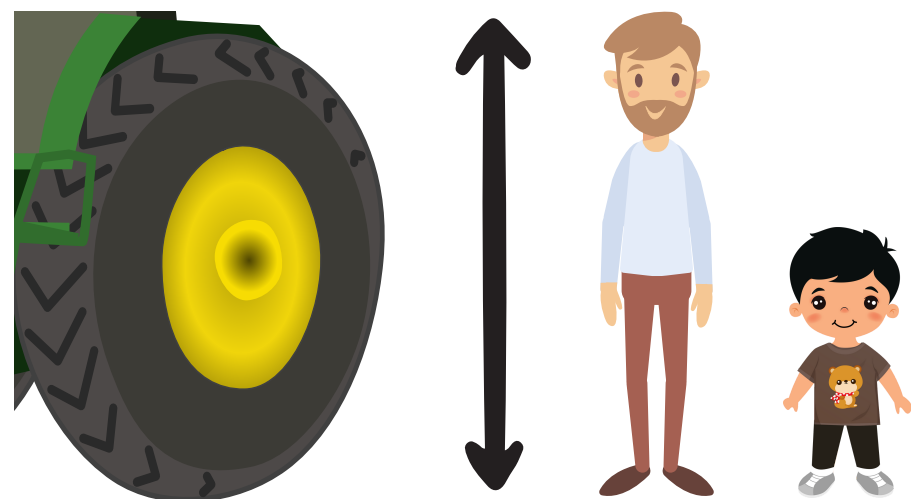


Suggested Activities

- Take a look at the tractor image and the vocabulary associated with it. Discuss the purpose of each of the features with your classroom.

Tractors Safety Tips for Children

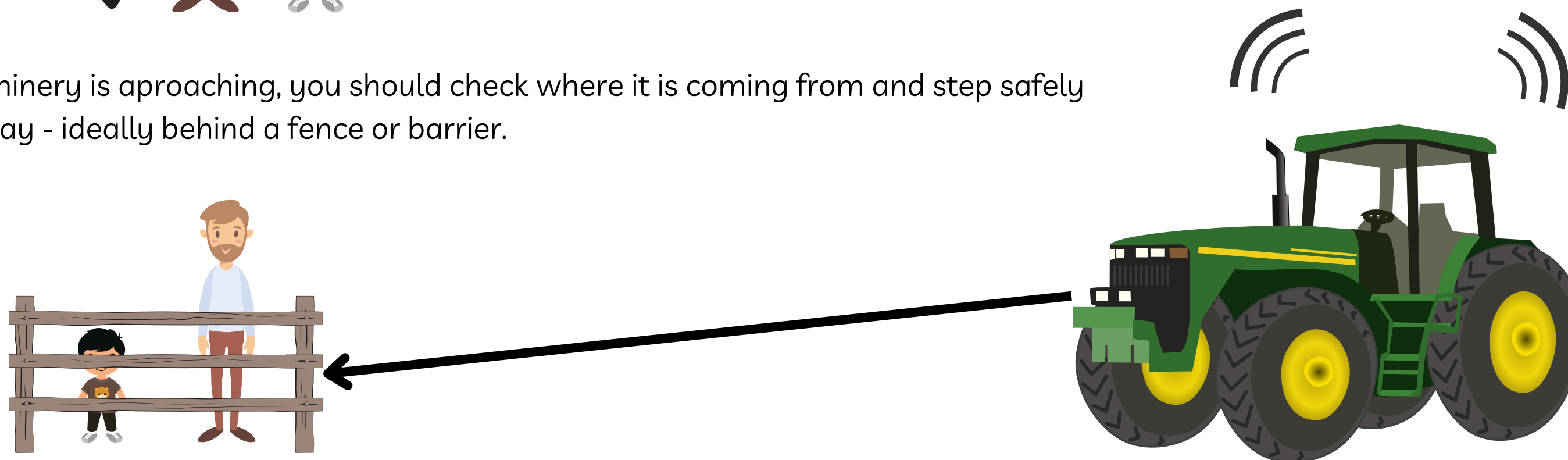
Did you know? If a child is under 7 years of age, they are not allowed to travel inside the cab of a tractor even if there is a passenger seat. Although riding in a tractor may seem like a fun idea, remember the farmer is at work and needs to have their full attention on the job at hand.



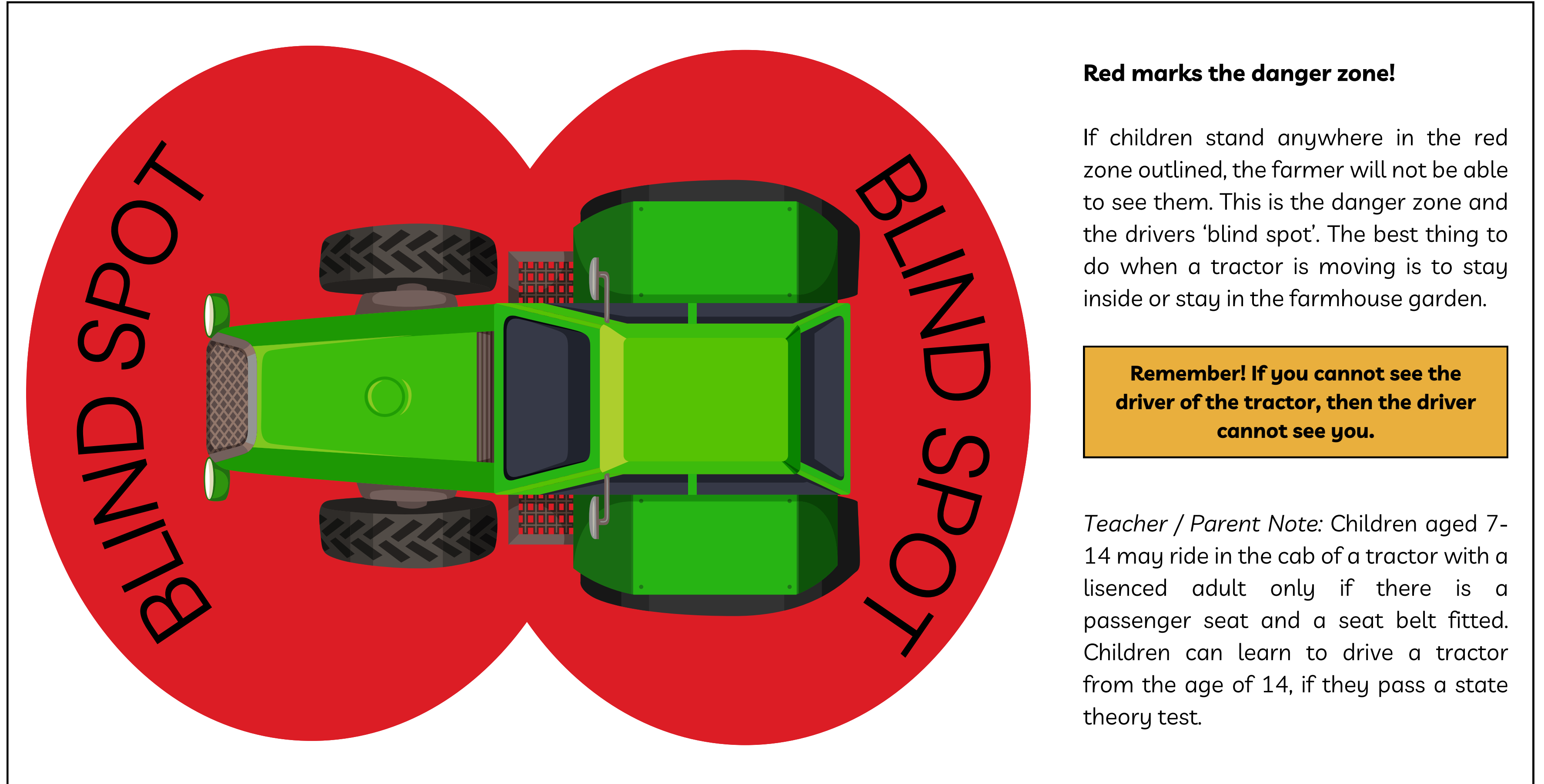
Tractors are massive machines, with wheels that are usually as large as an adult and twice the size of a child.

The farm is a busy workplace and is not safe for children. When you are on a farm, you should always play in a safe area, such as the house or garden that has a fence, and stay far away from farm machinery.

If farm machinery is approaching, you should check where it is coming from and step safely out of the way - ideally behind a fence or barrier.



Smile or wave at the farmer to make sure they can see you and wait where you are until they have passed by.



Red marks the danger zone!

If children stand anywhere in the red zone outlined, the farmer will not be able to see them. This is the danger zone and the drivers 'blind spot'. The best thing to do when a tractor is moving is to stay inside or stay in the farmhouse garden.

Remember! If you cannot see the driver of the tractor, then the driver cannot see you.

Teacher / Parent Note: Children aged 7-14 may ride in the cab of a tractor with a licensed adult only if there is a passenger seat and a seat belt fitted. Children can learn to drive a tractor from the age of 14, if they pass a state theory test.

What Should the Farmer Wear?

It is important that farmers and farm workers receive proper training on how to operate machine and equipment safely. They should also inspect the equipment before use to ensure that it's in good condition.

Farmers must follow all safety guidelines including wearing appropriate protective gear and avoiding distractions. Remember, farm machinery and equipment can help increase productivity on the farm, but safety should always come first. Children and pets must stay far away from the machinery and equipment when in use.

What should the farmer wear or have nearby when they are out on the farm?



These headphones are not for listening to music. They help reduce the noise levels when farmers are working with loud machinery. They protect their ears from damage.

When farmers are working with chemicals, they must use special gloves and eye shields. This will protect them from chemical burns.



Farmers should have their arms and legs covered. Overalls are a good option.



Farmers must also wear wellies or other boots. Some wellies will have extra protection in the toes.

The Power Take Off (PTO)

Many types of farm machinery can be attached to tractors. Each piece of machinery has an important job on the farm but can be dangerous. Remember, if you are under the age of seven - you cannot ride in a tractor!

A piece of equipment called a Power Take Off or PTO is used to connect a piece of machinery to the tractor. This equipment moves energy from the tractor into the machinery, making it move and carry out its required job.

The energy moves from the tractor into the PTO causing it to spin very fast. Every PTO should have a cover on it to prevent injury.

Children should never touch a PTO with or without a guard.

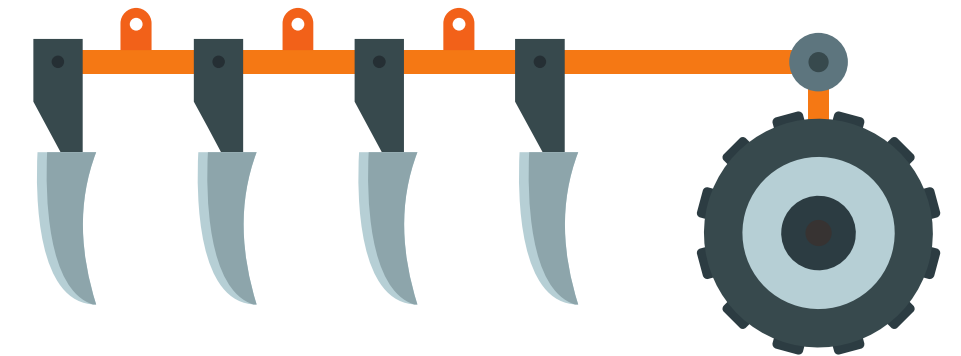


Suggested Activities

- Have a classroom discussion about the danger of PTOs.

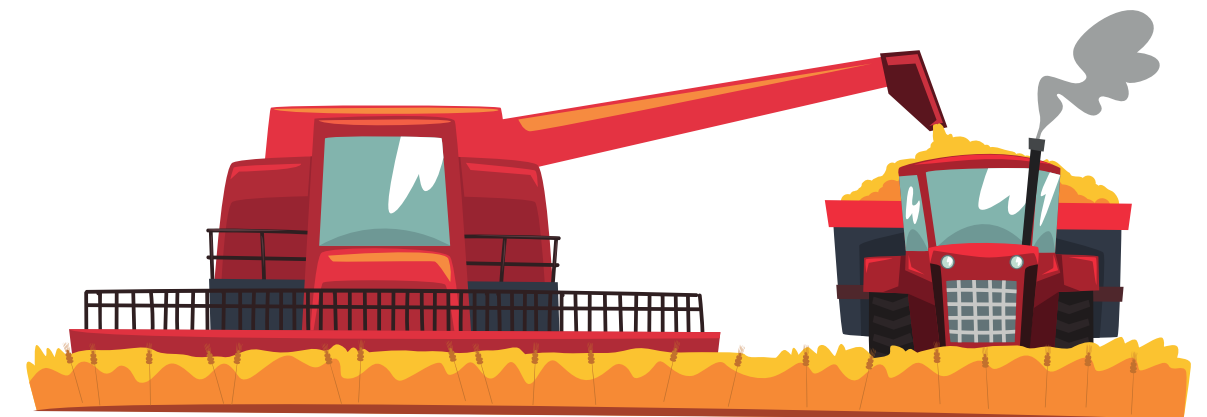
Farm machinery can be very impressive and interesting to learn about but we must stay far away from these machines while they are moving.

A plough is a machine that farmers attach to the back of tractors. It helps to prepare the soil for growing plants. It has big pieces of metal on the back that dig deep into the ground, turning over the soil and getting it ready to plant seeds. The farmer can lift the plough up and down using the powerful tractor.



A baler is another machine that farmers attach to the back of tractors. Balers collect cut grass to make into bales. Farmers will make silage bales or hay bales. Silage is grass that has been semi-dried. Hay is grass that has been fully dried. Bales can be square or round. The bales make it easier for the farmer to move and store the hay or grass.

Combine harvesters are one of the biggest and most important machines on a farm. They collect the crops when they are ready to harvest. They have big combs on the front that pull the crops in and sharp “teeth” which cut the crop just like scissors. When the combine is full, it can empty the crop into a trailer through a big pipe, just like the picture here.



Suggested Activities

- Can your class come up with any other types of machinery you might see on a farm?

Quad bikes are useful on the farm. The farmer can use a quad bike to drive in areas where there are no roads. Quad bikes should be used to carry out important jobs on the farm. They should never be used for playing games.

Important Quad Bike Rules:

1. Quad bikes are designed for one person only. Children or other passengers should never ride with another person on a quad bike.
2. It is recommended that only children aged 16 or older should use a quad bike.
3. The driver should always wear protective gear when driving a quad bike.

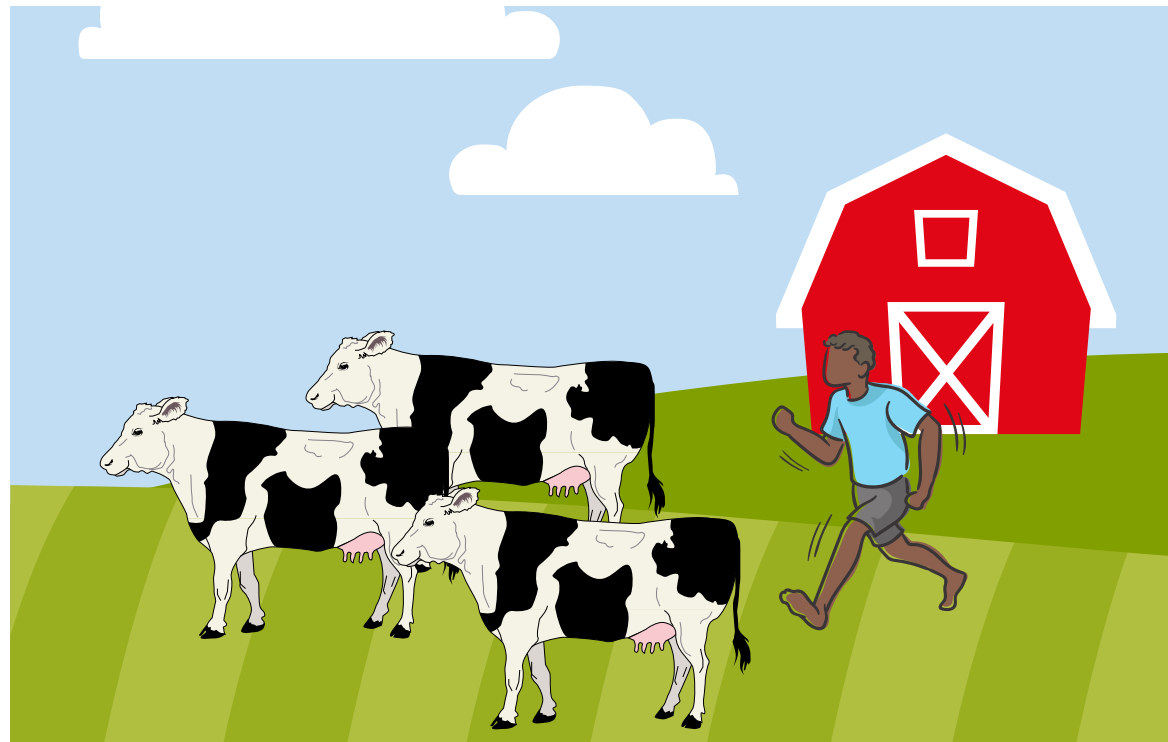


Strong gloves and boots are a good idea when driving a quad bike. This will protect the driver's hands and feet in the case of an accident.

A helmet is a very important safety measure when driving a quad. This will protect the driver's head in the case of an accident.



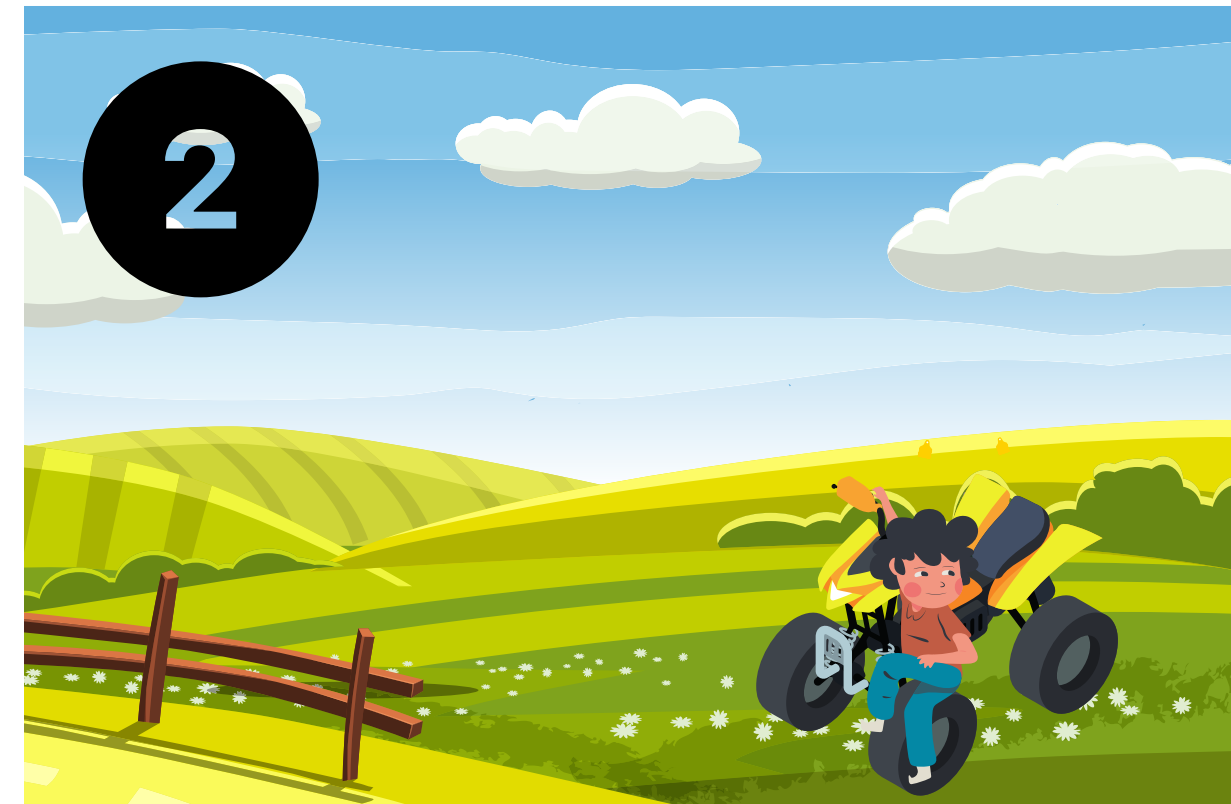
Quiz - What's Going On And Is It Wrong?



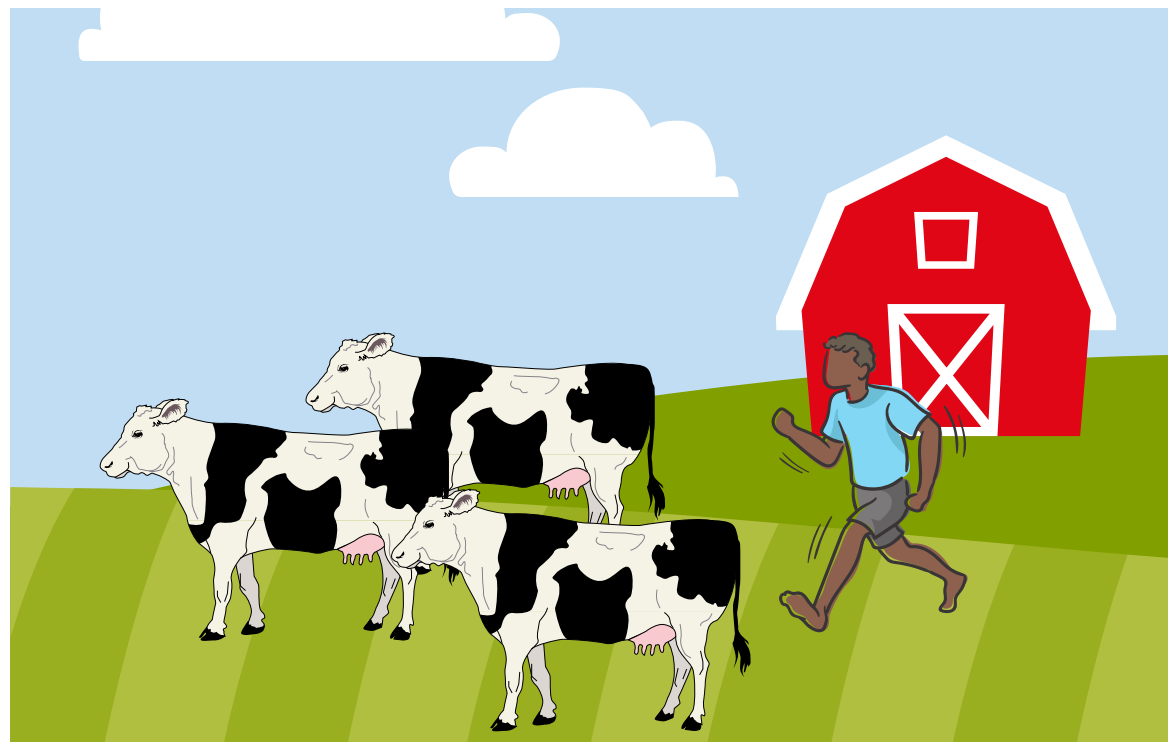
Quiz - What's Going On And Is It Wrong?



- There is a young child in the cab of the tractor.
- Children must be seven years old to ride in a tractor and they must wear a seatbelt.



- This child is playing near the quad bike.
- Quad bikes are not toys. They are vehicles the farmer uses for work.



- This farmer is not wearing any protective clothing.
- They need long trousers and boots.



- These people are too close to a moving tractor.
- The child is not wearing a hi-visibility vest.